

Rock Calendar

Listings taken from the
SRU Master Calendar of Events.

Today, Sept. 21

Nature Art Show opens
McKeever Environmental Learning Center
Sandy Lake
(Continues through Sunday)

Robert Karstadt Exhibition
Martha Gault Art Gallery
Maltby Center
(Continues through Sept. 28)

SGA movie: Evan Almighty
7 p.m., McKay Auditorium
(Also 7 p.m., Wednesday)

Saturday, Sept. 22

SRU men's soccer plays Millersville
Noon, Thompson Stadium

SRU women's field hockey plays East Stroudsburg
12:30 p.m. Jim Egli Field

SRU women's soccer plays Millersville
2 p.m., Thompson Field

Tuesday, Sept. 25

SRU field hockey hosts Mansfield
4 p.m., Thompson Stadium

SRU volleyball plays California
7 p.m., Morrow Field House

UPB: Comedian Arvin Mitchell
8 p.m., University Union

Wednesday, Sept. 26

Course Genie Software workshop
9 a.m., Maltby Center
Call Ext. 2070 to register

Thursday, Sept. 27

Deaf Awareness Day
Mary Ann Stefko, speaker
12:30 p.m., McKay Education Building
(Free hearing tests outside Bailey Library)

rockpride

Volume 7 • Issue 24 • September 21, 2007

A publication from the Office of the President for faculty, staff, and friends of Slippery Rock University of Pennsylvania

Eight years of growth—

SRU establishes another enrollment record

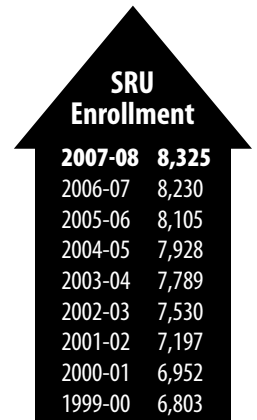
For the eighth consecutive year, Slippery Rock University enrolled a record number of students for fall semester, this year hitting 8,325, a 1.2 percent increase compared to a year ago.

“Once again, we are pleased to have hit our enrollment target,” said President Robert Smith in announcing the 2007-08 enrollment figures. “Our growth is testimony to the continued efforts we have undertaken to increase the value of a Slippery Rock University education and to the dedicated work of faculty and staff in ensuring our programs meet the rigorous demands of accrediting bodies that set national academic standards. Students and their parents know Slippery Rock University offers a quality, affordable education.”

Smith said the University's recent No. 5 ranking as a “Best Value among Public Colleges and Universities” by Consumers Digest and its inclusion in the Princeton Review's top 225 Public and Private Universities in the Northeast United States edition are validation the University delivers a quality education.

He said steady progress on the \$120-million residence hall replacement project “has continued to draw student interest as have our plans for a new Student Union and a Performing Arts Center. We continue to improve the campus to meet

(See Enrollment page 4)



Enrollment growth, performance success top president's report to Trustee Council

President Robert Smith told the Council of Trustees at their Sept. 14 meeting that enrollment and performance indicators would exceed last year's benchmarks.

Smith said that in addition to positive enrollment numbers, preliminary figures show “the average SAT score of this fall's incoming student remains above 1000, the average high school grade-point average for incoming students is up to 3.26 and the percent of students in the top 25 percent of their high school class is now at 35 percent.”

Smith also pointed to the summer Consumers Digest ranking of Slippery Rock University as No. 5 on the “Best Values among Public Colleges and Universities” list and the Princeton Review listing of SRU as one of the top 225 Public and Private Universities in the Northeast United States as “evidence that we have increased our quality.”

In other achievements, Smith said he expected SRU would do well in the Pennsylvania State System of Higher Education Performance Indicators report. The state system provides financial incentives for system universities reaching pre-determined goals in 65 specific areas. SRU has traditionally done well in the performance indicator report.

Smith said, “Our performance specific to efforts regarding diversity on campus as shown by the recruitment of students, staff and administration, has been particularly successful.” He cited nine areas, including increased numbers of new African-American students, Hispanic students, female executives, female faculty and the number of faculty who are people of color, as reaching 10-year highs.

Smith also said he has appointed Herman Jones, associate professor of social work, criminology and criminal justice, to lead a faculty group charged with finding ways to “challenge and broaden student's interpersonal/intercultural skills so they leave Slippery Rock University with a basic set of multicultural competencies.” The program will be addressed as part of the University's Oct. 9 Professional Development Day.

(See Trustee Council page 4)

SRU opens Pittsburgh entertainment excursions to public; tickets available

Residents of western Pennsylvania will have the opportunities to enjoy three major Pittsburgh arts performances at discounted rates thanks to Slippery Rock University and its alumni association, which organized the entertainment excursions.

The opening program, "Always... Patsy Cline" is based on the life of country singer Patsy Cline and includes an extraordinary, behind-the-scenes look at the music legend's life. The show, which features more than 20 of Cline's greatest hits, is being presented by the Pittsburgh Civic Light Opera at 2 p.m. Oct. 21 in Pittsburgh's Cabaret at Theater Square. Bus



transportation and lunch at the Cabaret are included in the \$52 per person ticket price. There is a six-ticket limit. Busses leave SRU's Russell Wright Alumni House at 11 a.m., with lunch at noon and a campus return at 5:15 p.m.

The second event is "Love is Here to Stay: The Romantic Songs of George Gershwin" presented by the Pittsburgh Symphony Pops. Marvin Hamlisch will conduct the concert featuring Doug LaBrecque, vocalist, and the All-Star College Chorus, including Slippery Rock University students, directed by Robert Page. The performance is at 2:30 p.m. Feb. 17 in Heinz Hall.



Hamlisch

Hamlisch's show pays tribute to the genius of George and Ira Gershwin's timeless love songs, including "Love is Here to Stay," "Embraceable You" and "Someone to Watch Over Me." A special reception for SRU friends and alumni will follow in the Mozart Room. Tickets are \$50 for Family Circle seating and the reception. Transportation is available for an additional fee. SRU students are being offered a reduced ticket price of \$23 or \$29, depending on seat location, for the concert, reception and transportation.

The third performance is "The Wedding Singer," a new romantic comedy based on the hit movie of the same name, at 1 p.m. April 14 in Pittsburgh's Benedum Center. The play introduced a new score paying homage to pop songs of the 1980s. Tickets are \$51 for First Tier seating. There is a six-ticket limit.



A \$140 package price for all three performances is also being offered.

Phone orders using a credit card are being accepted at Ext. 2018, or tickets may be ordered on the Web at: www.rockalumnicafe.com. Refunds will not be issued unless a performance is canceled.

SRU Women's Center promotes Breast Cancer Awareness Program with 'Rachel's Daughters'

The SRU Women's Center will screen the film "Rachel's Daughters," at 6 p.m. Oct. 1 in the University Room of North Hall.

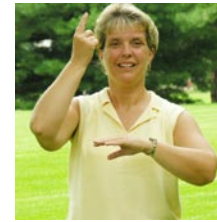
The event, part of a promotion for breast cancer awareness, will include a reception and discussion following the showing. The program is co-sponsored by the Pennsylvania Film Institute at SRU.

"Rachel's Daughters" follows a group of women who are battling or have conquered breast cancer. The women travel the country, visiting research centers and contamination sites, to interview specialists in the cancer research field. The story is one of passion, activism and hope for cancer victims.

Women who have survived breast cancer or are battling the disease should contact Jodi Solito, director of the SRU Women's Center at Ext. 2992, for further information.

American Sign Language Club hosts Deaf Awareness Day

The American Sign Language Club at Slippery Rock University will host Deaf Awareness Day Thursday with a keynote address by Mary Ann Stefko, mainstream and sign language coordinator at Pittsburgh's Western Pennsylvania School for the Deaf.



Stefko

The topic of her 12:30 p.m. address in McKay Education Building Auditorium is "Opportunities Are Knocking! Are You Listening!"

The group Sign Shine, comprised of WPSD students, will sign to music. In A Hearing Screening Van will be located in the Bailey Library Quad during the day to provide free hearing tests for members of the SRU community.

Stefko earned a master's of education in counselor education degree and a bachelor of science degree in communication disorders from Pennsylvania State University. In addition to 20 years teaching experience, she has extensive experience in educational interpreting and is a certified occupational hearing conservationist.

She has worked with deaf and hard-of-hearing children from preschool to high school levels in residential and mainstream educational settings. She has also taught hearing children sign language and is a frequent presenter at workshops and training programs related to deafness and hearing loss for parents, educators and the business community across Pennsylvania.

The club meets at 12:30 p.m. each Tuesday in Room 318 Spotts World Culture Building to learn more about the deaf culture and to study sign language.

Sign up for flu shots

SRU employees who received a flu shot last year are already pre-registered for this year. New employees and those who did not register last year but want a shot this year are asked to call the Office of Human Resources at Ext. 2070 to register beginning today. The shots will be offered in October.

Sign up for emergency alerts: www.sru.edu

SRU puts Hispanic culture in spotlight Oct. 4-23

The wealth of diversity found in the Hispanic culture will be highlighted during Slippery Rock University's sixth annual Hispanic Month and Día de la Raza celebrations running Oct. 4-23. Guest lectures by Colombian television journalist Manuel Teodoro and author Susan Chavez-Silverman from Pomona College highlight the celebration.

The event focuses on literature, cinema, art, dance and food related to the Hispanic culture.

"The month's events are intended to illustrate the wealth and the diversity of the cultures of the Spanish-speaking world," said Thomas Daddesio, assistant professor of modern languages and cultures.

The month opens with a 7 p.m. Oct. 4 dinner at Compadres Restaurant in Grove City. Tickets are \$5 per person and are available in Room 104 of



Chavez-Silverman

Carruth Rizza Hall. The event is limited to 100 participants.

Musuhallpa, a flute and string musical group from the Andes and Azucar, will present a workshop at 7 p.m. Oct. 10 in the University Club of North Hall.

Mel Gibson's "Apocalypto," a history epic about MesoAmerican Mayan culture will be screened at 7 p.m. Oct. 11 in SRU's Advanced Technology and Science Hall Auditorium, preceded by a 6:30 p.m. reception.

Panel discussion

The Oct. 12 event is a Dia de la Raza, a luncheon and panel discussion, about "Who are we? Negotiating Spanish/Latin American/Hispanic and Latino-a Ethnic Identities" at noon in the University Room of North Hall.

Teodora, a TV journalist from Bogota, Columbia, will lecture about "Investigative Journalism in Latin America" at 4 p.m. Oct. 15 in Spotts World Culture Building Auditorium. A reception will follow.

Chavez-Silverman presents "Killer

Crónicas: Bilingual Adventures in the Americas" at 4 p.m. Oct. 16 in the University Room of North Hall. She will sign copies of her book following the address.

The salsa band Azucar will perform from 9 p.m. to midnight Oct. 19 in Carruth Rizza Hall. The month's activities end with Spanish/Latin American games at 12:30 p.m. Oct. 23 in the University Union.

Event co-sponsors

The events are co-sponsored by the Hispanic Cultures Series Committee, SRU's College of Humanities, Fine and Performing Arts, College of Business, Information and Social Sciences, the departments of modern languages and cultures, English and communication, the Office of Intercultural Programs, Office of International Services, the Frederick Douglas Institute, the General Service Activity Fee, administered by Student Government Association, the Commonwealth Association of Students and the Latino Student Organization.

SRU sports squads earn national rank

Four Rock fall sports squads have attained national rankings from their respective coaching or media organizations.

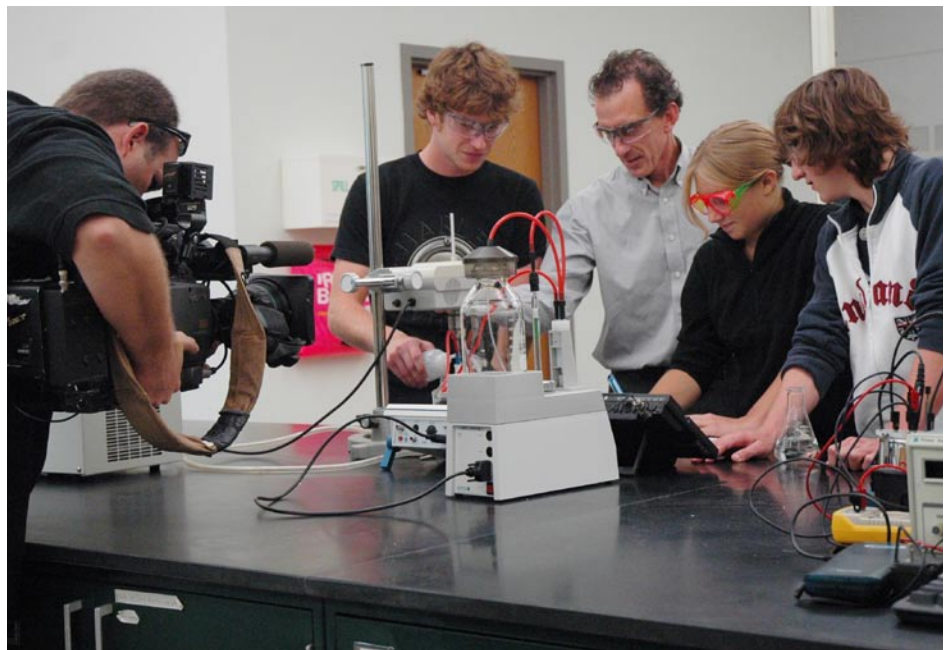
The women's soccer team leads the pack with a No. 3 national ranking and No. 1 regional ranking from the National Soccer Coaches Association of America. The Rock took a 7-1 overall record and 4-0 PSAC-West mark into Thursday night's game vs. IUP.

The men's cross country team is ranked eighth nationally and first in the region by the U.S. Track and Field and Cross Country Coaches Association.

The women's cross country team is ranked 20th nationally and fourth in the region by the USTFCCCA.

The football team is ranked 22nd nationally by CollegeSportsReport.com and 27th nationally by Don Hansen's National Weekly Football Gazette. The Rock takes a 3-0 record into Saturday night's home game vs. Kutztown.

For the latest news and results, visit: www.rockathletics.com or call The Rock Sports Hotline at Ext. 2962.



STAY TUNED FOR THE COMMERCIAL: FSN productions came to campus Wednesday to tape a TV commercial that will air on the FSN, Pittsburgh, beginning in October. Director Craig McConnell (left) shot science classes in the Advanced Technology and Science Hall, a dance class in West Gym and a painting class in Art Building 1. Above, Justin Burick of New Castle, Katie George of Wooster, Ohio, and Dan Cannon of Westlake, Ohio, work with Michael Stapleton, assistant professor of geography, geology and the environment. The commercial includes on-camera comments and voiceovers from SRU students explaining why it's a great time to be at Slippery Rock University.

3 SRU dance majors share experiences in India

SRU dance majors Lindsay Armstrong of Corry, Amie Davis of Carrolltown and Patricia Robinson of East Aurora, N.Y., will share their summer experience of studying classical Indian dance in Chennai, India, at a lecture/demonstration Oct. 10 at 7:30 p.m.

The program is in the Pearl K. Stoner Instructional Complex West Gym Dance Studio.

The three were invited to the southern city in India as part of the SRU Dance in India Initiative. The program was coordinated by Srinivasa Mani, SRU professor of professional studies, Nola Nolen-Holland, assistant professor of dance, and guest artist Jaya Mani.

The students began their study of Bharata Natyam, classical Indian dance, as part of Mani's "World Dance" class.

"Sponsoring SRU students' study of Bharata Nayam in India advances the dance department's world dance program," Nolen-Holland said. "It also contributes to cultural understanding between Americans and Indians through a unique program."

In Chennai, the students studied with master teacher Revathi Ramachandran, founder, director and leading artist of her dance school, Kala Sadhanalaya. The troupe visited historic dance sites in Chennai and in the southern Indian state of Tamil Nadu and had opportunities to visit New Delhi, Jaipur and Agra.

The campus presentation includes an informal concert featuring dances learned in India as well as a travelogue of their studies and performances in India.

Admission to the presentation is \$3 for students and \$5 for the general public.

Those interested in contributing to the Dance in India Initiative may send contributions to the SRU dance department. Tax deductible donations should be payable to the Slippery Rock University Foundation Inc. Donors are encouraged to indicate "Dance Initiative" on any contribution.



Armstrong, Davis and Robinson

Trustee Council (Continued from page 1)

In formal action, trustees approved a fiscal 2007-08 budget of \$136,288,519, a 2 percent increase compared to fiscal 2006-07.

Council passed routine reports covering contracts, fixed assets, and service and supply purchase orders.

A resolution formalizing plans for the renovation of Patterson Hall, based on a cost of \$2.1 million was approved. The renovation will turn the former residence hall into faculty offices and academic space. Initially, the facility will be used to house faculty during the planned renovation of Vincent Science Hall.

Council also authorized the sale of University-owned property at 212 E. Cooper St. The building was most recently used as the University's Center for Economic and Community Development, but is currently vacant.

Informational items

As part of the informational portion of the meeting, trustees were told of 52 instructional appointments for fall. Two faculty members joined the University as part of the international faculty exchange program. Hong Zhuang comes to SRU from China and Sungkyun Shin is from Korea. Both will teach in the modern languages and cultures department.

Trustees were told of a proposal submitted this summer, which if approved, will allow SRU to offer a Latin American Certificate. The certificate program works to expand student knowledge of Latin American cultures and literatures beyond requirements of the bachelor's of arts degree in Spanish. Those in the program will take additional courses in Latin American studies from the modern languages department and five other academic departments.

Retirements announced

Human Resources reported to the trustees the following retirements:

- Thomas Gaither, physical education, retired in May with 39-years of service;
- Francene Haymon, SRU Counseling Center, will retire in January with 33 years of service;
- Dennis Blom, maintenance repairman, retired in June with 19 years of service; and
- Guy Surrena, locksmith, retired in June with 23 years of service.

Two retired faculty members, Bernard Freydberg and Anita Gorman, were granted professor emeritus status. Both retired last May.

Council's next meeting is at 1:30 p.m. Dec. 14.

Enrollment (Continued from page 1)

the needs and expectations of our students and are creating an exceptional learning environment."

Housing draw

The University opened the first phase of its residence hall replacement project, funded by the Slippery Rock University Foundation Inc., last fall. The final phase is now under construction and will welcome students next fall. The new Advanced Technology and Science Hall, along with planned renovations to Vincent Science Hall, are adding strength to the University's science programs and providing students with the latest technologies. Architects are meeting this week with students, faculty and staff for input on the design of the proposed Student Union.

State system report

This year's undergraduate enrollment stands at 7,585, with graduate enrollment at 740. Total enrollment last year was 8,230 on the 15th day of classes, the official benchmark date set by the Pennsylvania State System of Higher Education for all state system universities.

Women and men

Monday's figures show 4,749 women enrolled fall semester, up from 4,682 a year ago, and 3,576 men, up from 3,548 a year ago. In other statistics, enrollment from the top five Pennsylvania counties, in order, show Allegheny, Butler, Lawrence, Mercer and Beaver leading the list, with the states of Ohio, New York, New Jersey and Maryland sending the most students from outside Pennsylvania. There are 89 international students this semester, with the United Kingdom, Japan, Ireland and Sri Lanka leading the list. There are five students from Kenya.

Minority enrollment

Minority student enrollment also continues to grow. Black student enrollment is up 5.6 percent compared to a year ago to stand at 397, and Hispanic student enrollment is up 16.7 percent to stand at 91.

Credit hours also increased 1.12 percent for a total of 115,893 hours for the semester.

SlipperyRock
University

www.sru.edu
for a rock solid education

rockpride is produced by the Office of University Public Relations, 201 Old Main, Slippery Rock University, Slippery Rock, PA 16057 724-738-2091

Slippery Rock University is an equal opportunity/affirmative action institution
A member of the Pennsylvania State System of Higher Education

Show your
Rock Pride
Send an E-postcard
www.sru.edu