

# Rock Calendar

Listings taken from the  
SRU Master Calendar of Events.

## Today, Jan. 18

Hoyt Artists Association Display  
Martha Gault Gallery  
Maltby Center  
(Continues through Feb. 8)

Last day to drop/add classes  
at computer terminal

## Saturday, Jan. 19

SRU indoor track/field  
PSAC West, Morrow Field House

## Monday, Jan. 21

Rev. Martin Luther King Jr. Observance  
No day or evening classes  
(Some University offices open)  
King Day of Service  
8:30 a.m. University Union

Last chance to drop/add courses on RockTalk  
Course withdrawal with "W" grade  
opens 7:30 a.m.

## Tuesday, Jan. 22

Classes resume, 8 a.m.

## Thursday, Jan. 24

University Forum, 12:30 p.m.

## Friday, Jan. 25

UPB event: Open Mic Night  
7 p.m., University Union

## Monday, Jan. 28

Last day for grade option

Last day to add course with professor's approval

UPB: Tom "TJ" Leyden  
Lectures: "Turning Away from Hate"  
8 p.m., University Union

## Wednesday, Jan. 30

SRU women's basketball hosts California  
6 p.m., Morrow Field House

SRU men's basketball hosts California  
8 p.m., Morrow Field House

## Thursday, Jan. 31

Slippery Rock Dance Theatre  
"In the Moment"  
8 p.m. Miller Auditorium  
(also 8 p.m. Feb. 1-2)  
\$10 general: \$5 SRU students

# rockpride

Volume 8 • Issue 1 • January 18, 2008

A newsletter for faculty, staff, and friends of Slippery Rock University of Pennsylvania

## SRU Martin Luther King, Jr., observance emphasizes volunteer community service

More than 250 Slippery Rock University students are expected to volunteer for community service projects planned throughout the region as part of the University's fifth annual observance of the Rev. Dr. Martin Luther King, Jr., Day of Service Monday. Na'im Akbar, a research associate in the Florida State University psychology department, will deliver the day's keynote address.

The King Day of Service was initiated by SRU's Office of Intercultural Programs and is described as "a day on, not a day off" as a means of honoring the late Rev. Dr. Martin Luther King, Jr. There are no classes at SRU Monday. Some University offices will remain open with skeleton staffs. Classes resume at 8 a.m. Tuesday.

"The day will again focus on community service in memory of the slain civil rights figure," said Robert Clay, assistant director of the Office of Intercultural Programs and chair of the planning committee.

Akbar, acclaimed by Essence Magazine as "one of the world's preeminent psychologists and a pioneer in the development of an African-centered approach in modern psychology," has served as an associate professor at Norfolk State University and chair of the Morehouse College psychology department.

He was trained as a scientist and practitioner in the field of clinical psychology and won the Dr. Martin Luther King, Jr., Distinguished Scholar Award at Florida State. Akbar was presented a doctor of humane letters by Edinboro University and was a speaker at last November's Harambee Summit hosted by SRU. He has written and lectured extensively.

The day opens with registration at 8:30 a.m. in the University Union followed by a performance by the Chosen Generation Gospel Choir and the presentation of the King Performance Competition.

The competition allows students to offer any form of artistic expression to communicate King's "Every man must decide whether he will walk in the light of creative altruism or in the darkness of destructive selfishness" quote. Civil Leadership Awards will also be presented as part of the morning program.

Box lunches will be distributed to the volunteers as they board transportation to their afternoon community-service work sites.

(See King Day page 4)



Akbar



King

## Office of Residence Life hosts 'Green Carnival'

In an effort to encourage students, faculty, staff and administration at Slippery Rock University to adopt "greener" habits in 2008, the University's Office of Residence Life will host a "Green Carnival" Jan. 28 in the University Union.

The free, 12:30 p.m. carnival will feature games made from recyclable materials, door prizes, a cardboard maze and opportunities to make eco art.

"With the start of the new year, we're hoping the University community will keep recycling and reducing their ecological footprint in mind when they make their new year's resolutions," said Christina Greggs, an Office of Residence Life graduate assistant. "By hosting this carnival, we hope to not only educate everyone about the importance of reducing, recycling and reusing, but also show how simple it is to adopt these concepts into everyday life."

## Trustees name new facility; donate to fire funds

SRU's council of trustees met Dec. 14. Here is a recap of formal actions:

Trustees approved a resolution to name the new, 5,000-square-foot locker room facility at N. Kerr Thompson Stadium The Women's Field Hockey/Lacrosse Center. The newly constructed facility serves as home to the SRU women's field hockey and women's lacrosse teams.

The building includes a training room, coaches offices, locker room and restroom space for the teams as well as public restroom facilities.

Trustees authorized a \$50 increase in the University Union Fee, which provides operational funding for the facility, to take effect next fall. Under state system board of governors' policy all auxiliary operations, such as the union, are required to be self-supporting.

Approval was granted to donate \$20,000, up from \$15,000 in recent years, to the Slippery Rock Volunteer Fire Department, which provides campus fire protection, and \$2,000, up from \$1,000, to be shared by the Sandy Lake and Stoneboro volunteer fire departments, which provide fire protection to the McKeever Environmental Learning Center at Sandy Lake which is operated by SRU. The SRVFD donation is to be shared with the rescue squad.

Such donations were initiated in 1975 when state law gave approval to the 14 state system universities to donate to their local fire departments as a means of supporting fire protection service to the various campuses.

### Auditor's report

Trustees were presented the 2005-06 financial report, including an independent auditor's report prepared by Parente-Randolph stating, "In our opinion, based on our audits and the reports of other auditors, the financial statements referred to present fairly, in all material respects, the respective

financial position of the University and of its aggregate discretely presented component units as of June 30, 2006 and 2005." The unqualified audit noted the University was "in conformity with accounting principles generally accepted" in the U.S.

President Robert Smith praised the University's finance and administration division for its "innovative ideas, integrity of processes and stewardship of our resources" and for the audit's glowing report.

In routine items, council approved minutes of the Sept. 14 session and the submitted contracts, fixed assets, and service and supply purchase order reports. Council was told of 25 instructional appointments, including Yakako Ishimaru and Eri Iwaya who teach Japanese in the department of modern languages and cultures. Fifty-three other hirings were reported.

### Retirements announced

Four retirements were reported to trustees:

- Royce Lorentz, associate professor of professional studies, who retired with 32 years service;
- Abbas Mamoozadeh, associate professor of professional studies, who retired with 32 years service;
- Denise Barger, clerk typist 2 in the Office of International Services, who retired with 16 years service; and
- Joyce Martin, custodial worker in facilities and planning, who retired with 15 years service.

Claire Schmieler, who retired in 2003 as assistant vice president for student affairs, was named an administrator emeritus.

Council's next session is 1:30 p.m. April 4 in Old Main.

Smith presented his quarterly report, telling trustees, "The University continues to build a legacy of success." Additional details are available in the news release posted at: [www.sru.edu](http://www.sru.edu).

## Basketball players earn Athletic Conf honors

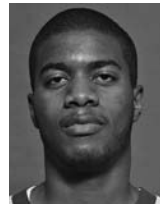
Rock basketball student-athletes Haley Gaidosh and Cory Somerville were named this week as recipients of Pennsylvania State Athletic Conference weekly awards.



Gaidosh

Gaidosh, a sophomore post player from Pittsburgh, was named as the PSAC-Western Division women's basketball "Player of the Week" after averaging 17.5 points and six rebounds in two SRU wins last week.

Somerville, a freshman post player from Pittsburgh, earned PSAC-Western Division men's basketball "Rookie of the Week" honors in recognition of his 14.5 points and 10.5 rebounds averages in two games last week.



Somerville

The women's basketball team dropped an 82-59 decision Wednesday to visiting Edinboro to fall to 6-10 on the season, 0-1 in PSAC-West action.

The men's basketball team lost an 83-68 decision Wednesday to Edinboro and now has a 2-13 record this winter.

### In other Rock sports news:

- The women's swimming team won one and lost one last Saturday in a three-team competition at Edinboro. The Rock swamped Penn State-Behrend by a 102-19 score and lost a 73-47 decision to Edinboro and now owns a 2-3 dual-meet record this winter.
- Rock senior offensive tackle Mike Butterworth helped lead the East team to victory Jan. 11 in the Valero Cactus Bowl all-star game in Kingsville, Texas. The game featured the top NCAA Division II players in the nation.

## SRU students obtain \$5,000 grant to expand greening programs

The Slippery Rock University Student Government Association has received a \$5,000 grant from Pittsburgh 250 Community Connections to expand two greening programs on campus and into the Slippery Rock community.

Students will plant 100 trees and obtain at least 10 new bicycles for a Green Bike Initiative that makes loaner bicycles available to anyone on campus. Organizers want riders to use the bikes to reach the Slippery Rock business district and off-campus residences, minimizing reliance on emission-producing vehicles.

"Everyone is so focused on reducing his or

her carbon footprint these days. With one grant, our students will be making a long-lasting impact on our campus community," said Diana Wolak, SRU's fiscal assistant for CoOperative Activities and the grant writer.

The \$5,000 will be split between the tree planting and Green Bike programs. Students conceived and are leading both programs.

"I'm ecstatic," said Dan Cannon, a senior from Westlake, Ohio, and co-founder of the Green Bike Initiative, which paints donated bicycles green for easy identification. "As a senior, it's a great thing to get this grant because I know the Green Bike

Initiative has been successful and will now have the money to make an even larger impact in the future on the Slippery Rock University community."

SGA's "Green and Growing Initiative" grant application was one of 88 out of 540 proposals to receive funding from Pittsburgh 250 Community Connections.

SGA began a tree-planting program last spring by purchasing 15 trees from a local nursery and 100 saplings from the Arbor Day Foundation for the beautification of campus. The grant will allow SGA to purchase an additional 100 trees.

## Limited tickets available for Feb. 8 Philadanco! show

A very limited number of tickets remain for the Slippery Rock University Performing Arts Series show Philadanco! The Philadelphia Dance Company Feb. 8 in Miller Auditorium.

The trailblazing, contemporary dance group will perform at 7:30 p.m., showcasing diverse dance choreography, including modern, hip-hop and waltz styles.

Dancers will perform four pieces "Violin Concerto," "Pulse," "La Valse" and "The Philadelphia Experiment." Choreographers are Milton Myers, Daniel Ezralow, Gene Hill Sagan and Rennie Harris.

Philadanco, formed in 1970, emphasizes innovative works by American choreographers and has performed to acclaim in Europe, Asia and across the United States.

"We are excited that we are quickly reaching another sold out performance for the series," said Deborah Baker, manager of University events.

Those with tickets they will be unable to use are asked to donate them back to the series. An IRS tax-donation will be provided for the full ticket value. Call Ext. 4499 for details.

Dance Magazine said, "Philadanco!'s dancers are a miracle of skill and energy. They work in a range of idioms most companies don't even try to possess... A company that can do more than just anything...It can represent the possibilities of the human spirit through dance."

Philadanco! was started in 1970 by Joan Myers Brown. The troupe performs for more than 100,000 people a year and employs dancers year round. The company founded the International Conference of Black Dance Companies and International Association of Blacks in Dance, which addresses the needs of the African-American dance community.

AVI Food Systems, Inc., the campus food vendor, will offer an all-inclusive dinner prior to "Philadanco!" A 5:30 p.m. dinner of New Orleans shrimp remoulade salad, pork filet mignon au poivre, roasted garlic thyme potatoes, wilted spinach and fresh carrots with croissant pudding for dessert is available for \$22 (\$17 for SRU students) in the University Club of North Hall prior to the dance program. Call Ext. 2840 for dinner reservations.

Philadanco! tickets are \$18 for adults, \$15 for those 62 and older and 17 and under and \$8 for SRU students. Call Ext. 2091 for ticket information.

## 'In the Moment' captures spirit of SRU dancers

Works by three guest choreographers will be featured by the Slippery Rock University Dance Theatre when it offers three performances of its "In the Moment" showcase Jan. 31-Feb. 2 in Miller Auditorium.

The concert highlights the choreography of internationally acclaimed New York

choreographer Lar Lubovitch, Washington, D.C., choreographer Helanius Wilkins and Pittsburgh choreographer Mark Taylor.

"Marimba," a historic work created in 1976 by Lar Lubovitch, one of the nation's

most revered contemporary choreographers, is staged for

10 dancers to the music of pioneer minimalist American composer Steve Reich. The dance is filled with tension and hypnotic pull, much like its instrumental namesake, said Jennifer Keller, associate professor of dance.

Dance majors at SRU worked last spring and fall with John Dayger, former long-time Lar Lubovitch Dance Company member, to learn the work.

"We're so focused on the music and being in unison that time on stage is suspended; it's fun knowing you are so connected to the other dancers," said Angel Streitman, a senior dance

major from Butler.

The dancers will also perform the work at the Sharing the Legacy Conference hosted at Hunter College in March.

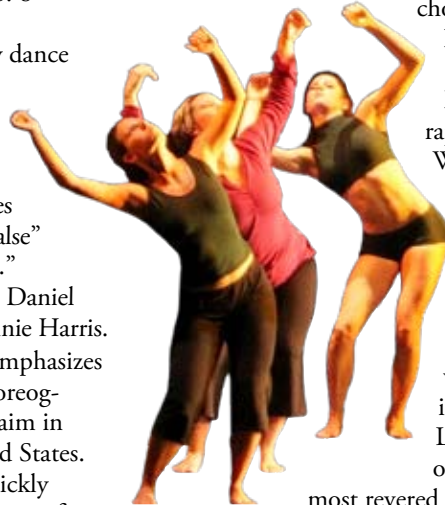
Wilkins, artistic director of Edgeworks in Washington, D.C., created "Falling" for dance majors last spring. A luscious and physically demanding dance, the work encourages performers and the audience alike to experience the emotional and physical connotations of losing equilibrium through space.

Keller will restage Taylor's "Ice," originally created for SRU dance majors in 2001. Set to the famous "Diamond Music," by Karl Jenkins, the work translates the glittering facets of a diamond to comedic human gestures and tight group formations. With a new cast of 14 dancers, the musical work is a display of precision, partnering and geometry.

Talented student choreographers will present diverse dance styles, including tap, hip hop, contemporary partnering and modern dance. Student choreographers participating are Todd Englander from Wantagh, N.Y.; Stephanie Frey, Irwin; Amber Henderson and LaKeisha Mackey, both of Philadelphia; Cara Hoover, Mayport; Darcey Karas, Baden; Katie Kelly, Monroeville; Rachel Renock, New Kensington; and Streitman.

The concert is at 8 p.m. Jan. 31-Feb. 2. Tickets, available at the door, are \$10 general admission; \$5 for students with ID.

For more information, call the SRU dance department at Ext. 2036.



## SRU hosts Feb. 9 FAFSA Completion Day for college-bound high school students

Slippery Rock University's Office of Financial Aid is offering a free financial aid assistance program Feb. 9 to help college-bound students complete the first step for accessing financial aid for college — filling out the Free Application for Federal Student Aid Form.

The form is required by colleges and universities to qualify for grants, loans and work-study. SRU's FAFSA Completion Day will be from 10 a.m. to 1 p.m. in the Advanced Technology and Science Hall. No appointment is necessary.

Students 23 or younger should attend with a parent or guardian. Students should bring their parents' and their own completed tax forms for 2007. Families can also apply with estimated information

or fill in the other questions and return to the online application when they have completed their taxes.

"Families can come in with their financial information and sit at a computer and fill out the FAFSA online, knowing that there are aid professionals in the room should they get stuck," said Patty Hladio, SRU director of financial aid.

SRU's session is offered in combination with more than 30 other sites across Pennsylvania as part of a statewide "FAFSA Completion Day" initiative organized by the Pennsylvania Higher Education Assistance Agency.

For more information call Ext. 2044 or go to [www.sru.edu/finaid](http://www.sru.edu/finaid).

## Rock Dollars ID program spreads beyond Slippery Rock

Contactless technology that came to Slippery Rock University's 9,500 students, faculty and staff in the form a postage stamp-size tag, is now spreading beyond the campus community to Grove City, Butler, Ellwood City and further as merchants realize its conveniences.

"We launched the new Rock Dollars/ID payment system in August with 12 participating merchants. Now we have 34 willing to accept Rock Dollars payments by ID card or cell phone tag," said Barry Welsch, campus card project manager for Heartland Payment Systems, the payment services company that brought the technology to SRU.

The system – the first of its kind in the country – uses contactless tags that communicate with an electronic reader without physically touching it. The system gives users a cash-free way to use the campus dining halls, bookstore, laundry and vending facilities.

"It's more organized. You have so much to worry about as a college student, you don't want to worry about carrying cash," said Kristi Wesolowski, an SRU sophomore from Freedom.

Rock Dollars are the debit spending accounts users create for the system and will pack even more value as spring semester classes resume. Students will be able to get their hair done, have their car worked on, or hang out at a coffee bar – without using cash.

New off-campus Rock Dollars merchants include the Sandra Van Dyke Hair Salon in Harrisville, Diehl Automotive Group in Butler, Compadres Mexican Restaurant in Grove City and MoBo's in Ellwood City. They join Giant Eagle, Luigi's, Subway, Coffaro's Pizza and Sheetz in Slippery Rock, among others, already on board.

"Students have been coming into Butler, going into Grove City and they're asking about this system, and of course the merchants like the technology and are interested in gaining those students as customers so they're participating," Welsch said.

Merchants say the system plays to the tech-savvy college generation.

"I think it's really going to take off," said Sandra VanDyke, owner of the Harrisville salon, whose clientele includes SRU students. "It's worry free for students."

"I thought it was a good way to help students. They like to use the cards instead of their cash," said Armando Navarro, general manager of Compadres. "They come in and swipe the cards. For us, it works like a credit card."

Rock Dollars does not require a minimum or maximum deposit, and students have the option of involving their parents with the accounts. Under a unique "Give Something Back Program" for every purchase a 0.5 percent rebate goes to the Slippery Rock University Foundation Inc. and 1 percent goes back to the student to keep or donate to a charity of their choice.

For a limited time, every student who adds \$100 or more to his or her Rock Dollars account will receive a T-shirt, said Beverly Lumley, system administrator for the card program at SRU. The T-shirts have SRU printed on the front, with Rocky, SRU's mascot, and the words, "1st In The Nation To Rock It" on the back.

"Since we've taken the Rock Dollars off campus, this program has really become widely accepted by our students, staff and faculty," Lumley said. "It's a huge convenience for students. Not only are students using the technology on and off campus, they're putting more money into their Rock Dollars accounts."

She said the University will begin issuing the Rock Dollars ID cards to students during orientations in March and over the summer so that by the time new students arrive for fall their Rock Dollars accounts will be in place.

"It all boils down to providing convenience," Lumley said.

## King Day (Continued from page 1)

In Slippery Rock, volunteers will lend a hand at Home 2 Me, Inc., the Slippery Rock Personal Care Home, Camp Crestfield, the Slippery Rock Parks and Recreation facilities and the SRU Child Care Center and SRU Dance Studio. In Grove City, students will work at Fellowship Manor and Orchard Manor, and in New Castle, students will offer help at Clen Moore Presbyterian Church, St. John United Holy Church, Jameson Care Center, the Church of Genesis and the New Castle City Rescue Mission.

## PASSHE universities raise \$42.6 million in private funds in 2006-07

HARRISBURG – The 14 Pennsylvania State System of Higher Education universities raised a combined \$42.6 million in the 2006-07 fiscal year from private sources, including alumni and parents of current students. Slippery Rock University provided \$2,093,814 of that total.

The market value of the PASSHE university endowments increased by more than \$30 million in 2006-07. The market value has increased by more than \$50 million over the last two years and now stands at a record \$240.4 million.

PASSHE alumni continued to be the schools' biggest supporters, donating almost \$14 million to their alma maters last year, or about one-third of the total contributed by private individuals, corporations, foundations and other organizations. Parents of currently enrolled students donated about \$1.6 million.

Other individual donors contributed about \$7.8 million (18 percent) to the PASSHE universities in 2006-07, while corporations contributed \$7.5 million (17 percent). Foundations made donations totaling \$5.2 million (12 percent) and other organizations combined, about \$6.6 million (16 percent).

In all, about 11 percent of PASSHE university alumni, including those at SRU, contributed to their alma maters in 2006-07. Among similar type public institutions in the region, only about 9 percent of alumni donated to their former schools.

"Private fundraising is becoming increasingly important to public universities across the United States, and PASSHE schools are no exception," said board of governors Chairman Kenneth M. Jarin.

"It is especially gratifying to see the level of support our universities are receiving from their alumni and the parents of our current students. The support the universities receive from these important groups of individuals is a strong endorsement of the quality of the educational opportunities PASSHE universities provide."

Private support from all sources help enable PASSHE universities to enhance learning opportunities for students, said Chancellor Judy G. Hample. "We are extremely grateful to the individuals, as well as the corporations, organizations and foundations, who invest in our universities, in our students and in the commonwealth," Hample said.

The majority of the gifts received by the PASSHE universities were designated for specific uses, including student scholarships and to help fund campus construction and renovation projects.

